



0811 Sanitary Fixtures

Document version: 2.0

Published date: 15/09/2022

Disclaimer: The information within this document once printed/exported will be classed as an uncontrolled copy. Its currency must be checked by visiting the EFSG/Technical Standards website prior to using the information for any purposes.

Table of contents

0811 Sanitary Fixtures	0
Table of contents.....	1
List of tables	1
List of figures	3
00 Design principles.....	4
0.01 Main considerations	4
0.02 Policies and regulations	4
Specification	4
01 General.....	4
02 Product	4
03 Execution.....	5
04 Selections.....	5
4.01 Sanitary Fixtures.....	5
4.02 Items with Integrated Sanitary Fixtures installed by Contractor	23

List of tables

Table 01: Basins (Communal Hall, Gym, Staff Amenity and Materials Workshop)	5
Table 02: Basins - Access - 1 tap hole.....	6
Table 03: Basins - Access - 3 tap holes	6
Table 04: Basins (Individual Toilets, Clinic).....	7
Table 05: Basins (PS & SSP Staff Shower)	7
Table 06: Bath (Senior Student Bathroom)	8
Table 07: Sink (Canteen)	8
Table 08: Laundry Troughs.....	9
Table 09: Bucket Sink - Hinged Grate	9
Table 10: Bucket Sink (No Hinged Grate)	10
Table 11: Water Closet Assembly	10
Table 12: Water Closet Assembly (PS and HS).....	11

Table 13: Water Closet Assembly (Pre School and Early Childhood)	11
Table 14: Water Closet Assembly (Staff and Student Ambulant).....	12
Table 15: Urinal Assembly	12
Table 16: Urinal Flusher.....	12
Table 17: Wash / Drinking Trough - Fabricated	13
Table 18: Art Trough - Fabricated	16
Table 19: Special Art Trough with bench - Fabricated.....	17
Table 20: Clay / Plaster Arrestor Art Trough with Pottery Wheel - Fabricated.....	19
Table 21: Plant Soaking Shelf Trough.....	21
Table 22: Splashbacks.....	23
Table 23: B-05 Bench Cupboard, SK-42 Sink.....	24
Table 24: B-06 Bench Cupboard, SK-32 Sink.....	24
Table 25: B-080S Bench Cupboard, SK-40 Sink	25
Table 26: B-21 Bench Cupboard, SK-50 Trough	25
Table 27: B-21 Bench Cupboard, SK-32 Sink.....	25
Table 28: B-21 Bench Cupboard, SK-41 Sink.....	26
Table 29: B-21 Bench Cupboard, SK-42 Sink.....	26
Table 30: B-21 Bench Cupboard, SK-34 Sink.....	27
Table 31: B-48 Bench Cupboard, SK-32 Sink.....	27
Table 32: B-70 Darkroom Trough, SK-41 Sink	28
Table 33: M-79 Top, SK-40 Trough.....	28
Table 34: SP-48 Bench Cupboard, SK-42 Sink	28
Table 35: SP-49 Bench Cupboard, SK-42 Sink	29
Table 36: B-0506 Bench, SK-41 Sink.....	29

List of figures

Figure 01: Wash Trough	15
Figure 02: Art Trough and Bench	17
Figure 03: Special Art Trough with Bench.....	18
Figure 04: Clay / Plaster Arrestor	20
Figure 05: Plant Soaking Shelf	22

00 Design principles

0.01 Main considerations

It is a requirement to undertake the [00 PLANNING AND DESIGN/0001R - DESIGN REFERENCE](#) and [GLOSSARY OF TERMS](#) information into all aspects of design, detailing and delivery when developing the content here within. Clear demonstration of adherence to these requirements is part of the services and will be called upon at key points in the project and during at the discretion of the Department of Education (DoE).

0.02 Policies and regulations

In accordance with the NSW Government Resource Efficiency Policy, all fixtures and fittings must be at least the average WELS star rating by product type. Where WELS rating is not available, use the alternative WaterMark rating scheme.

All new water-using appliances must be at least 0.5 stars above the average Water Efficiency Labelling and Standards (WELS) star rating by product type, except toilets and urinals, which must be purchased at the average WELS star rating.

Specification

01 General

As per current NATSPEC except as follows:

Appliances and equipment purchased in the following categories with star ratings under the WELS scheme will be at least:

- showerheads – 3 stars (>7.5 but <=9.0 l/min)
- toilets - 4 stars
- urinals – 5 stars
- dishwashers – 5 stars
- taps and flow controllers – 5 stars.

02 Product

As per current NATSPEC.

03 Execution

As per current NATSPEC.

04 Selections

As per current NATSPEC except as follows:

GUIDE NOTE: Delete subclause "4.1 Sanitary Fixtures" nominated in NATSPEC Building Template/ Worksection and replace with the following text:

4.01 Sanitary Fixtures

Table 01: Basins (Communal Hall, Gym, Staff Amenity and Materials Workshop)

Requirements	
Location	PS / HS Staff Toilets HS Toilets Boys + Girls (Gym used as Entertainment Venue) PS Toilets Boys + Girls (PS Communal Hall) HS Materials Workshop PS Bulk Store (General Assistant)
Material	Vitreous china
Colour	White
Size (L x W) (mm)	500 W x 410 L approx.
Tap holes	One (1)
Soap recesses	Yes
Trap and shroud	Concealed trap + shroud
Bottle traps	Not accepted
Plug and waste outlet size	Anti-vandal waste 40-32mm chrome plated brass and white plastic plug
Installation and support	Built in to vanity bench or wall mount fixing
Overflow	Yes
AS compliance	AS 1428.1, AS 1730

Table 02: Basins - Access - 1 tap hole

Requirements	
Location	HS / PS Accessible Toilets HS / PS Accessible Bathrooms
Material	Vitreous china
Colour	White
Size (L x W) (mm)	500 W x 410 L approx.
Tap holes	One (1)
Soap recesses	Yes
Trap and shroud	Concealed trap + shroud
Bottle traps	Not accepted
Plug and waste outlet size	Anti-vandal waste 40-32mm chrome plated brass and white plastic plug
Installation and support	Wall mount fixing
Overflow	Yes
AS compliance	AS 1428.1, AS 1730

Table 03: Basins - Access - 3 tap holes

Requirements	
Location	HS / PS Accessible Shower, Toilet, HS / PS Assisted Shower, Toilet, Change
Material	Vitreous china
Colour	White
Size (L x W) (mm)	500 W x 410 L approx.
Tap holes	Three (3)
Soap recesses	Yes
Trap and shroud	Concealed trap + shroud
Bottle traps	Not accepted
Plug and waste outlet size	Anti-vandal waste 40-32mm chrome plated brass and white plastic plug
Installation and support	Wall mount fixing
Overflow	Yes

Requirements	
AS compliance	AS 1428.1, AS 1730

Table 04: Basins (Individual Toilets, Clinic)

Requirements	
Location	HS / PS Staff Individual toilets HS / PS Staff Ambulant Toilets Community Clinic
Material	Vitreous china
Colour	White
Size (L x W) (mm)	450 W x 250 L approx.
Tap holes	One (1)
Soap recesses	Yes
Trap and shroud	Concealed trap + shroud
Bottle traps	Not accepted
Plug and waste outlet size	Anti-vandal waste 40-32mm chrome plated brass and white plastic plug
Installation and support	Wall mount fixing
Overflow	Yes
AS compliance	AS 1730

Table 05: Basins (PS & SSP Staff Shower)

Requirements	
Location	PS Staff Shower / SSP Staff Shower
Material	Stainless steel
Size (L x W) (mm)	500 W x 400 L approx.
Tap holes	One (1)
Soap recesses	Yes
Trap and shroud	Concealed trap + shroud
Bottle traps	Not accepted

Requirements	
Plug and waste outlet size	Anti-vandal waste 40-32mm chrome plated brass and white plastic plug
Installation and support	Wall mount fixing
Overflow	Yes
AS compliance	AS 1730

Table 06: Bath (Senior Student Bathroom)

Requirements	
Location	HS Senior Student Unit Toilet / Bathroom
Material	Acrylic
Colour	White
Size (L x W) (mm)	1525 W x 720 W x 390 D approx.
Tap holes	No
Soap recesses	No
Installation and support	Built in
Overflow	Yes
AS compliance	AS 2023

Table 07: Sink (Canteen)

Requirements	
Location	HS / PS Canteen
Material	Stainless steel, Grade 304, bright finish
Bowls	Two (2)
Capacity	21 litres each bowl
Bowl Size (L x W) (mm)	350 W x 405 L x 180 D each bowl
Overall size (L x W) (mm)	1500 L x 500 W approx.
Tap holes	One (1)
Drainer	Twin located both sides of bowls. Fluted finish. 380mm each drainer
Overflow	Yes

Table 08: Laundry Troughs

Requirements	
Location	HS / PS Laundry HS GLS Art HS Science Lab (eye wash) HS Visual Arts and HS Materials Workshop
Material	Stainless steel
Bowls	One (1)
Capacity	45 litre or 70 litres
Overall size (L x W) (mm)	630 L x 586 W x 873 H approx.
Tap holes	One (1)
Splashback flange	At back 50mm H
Trough mounting	White permacoat steel cabinet with hinged door
Bypass	Yes
Waste outlet	Stainless Steel Grate
Overflow	Yes
Splashback	Only where nominated in EFSGH room data sheets
Splashback material	Stainless Steel
Splashback size	450 H x full width of laundry trough

Table 09: Bucket Sink - Hinged Grate

Requirements	
Location	HS / PS Cleaners Distributed Store HS / PS Cleaning Supplies Store HS Botany Store
Material	Stainless steel, bright annealed
	No vitreous china bucket sinks to be used on school projects
Overall size (L x W) (mm)	570 L x 500 W x 180 H approx.
Tap holes	One (1)
Splashback flange	100 H upstand
Overflow	Yes

Requirements	
Mounting	SS legs support or wall mounted brackets, masonry anchors
Mounting Height	Rim 500mm above FFL
Drainer	Twin located both sides of bowls. Fluted finish. 380mm each drainer
Hinged grate	SS heavy duty

Table 10: Bucket Sink (No Hinged Grate)

Requirements	
Location	HS Wood and Metal Workshop HS Outdoor Covered Workshop
Material	Stainless steel, bright annealed
	No vitreous china bucket sinks to be used on school projects
Overall size (L x W) (mm)	570 L x 500 W x 180 H approx.
Tap holes	One (1)
Splashback flange	100 H upstand
Overflow	Yes
Mounting	SS legs support or wall mounted brackets, masonry anchors
Mounting Height	Rim 700mm above FFL
Drainer	Twin located both sides of bowls. Fluted finish. 380mm each drainer
Hinged grate	SS heavy duty

Table 11: Water Closet Assembly

Requirements	
Location	HS / PS Access Toilet Staff and Student HS / PS Access Shower / Toilet HS / PS Access Shower / Toilet / Change
Wels Rating	4 Star
Dual Flush	4.5 / 3 litre dual flush
Backrest	Accessible Backrest
Seat	Single flap seat, Institutional hinges, rotatable, buffers.

Requirements	
Luminous Contrast	Ensure colour selection of wall and floor tiles achieves luminous contrast to seat to AS 1428.1
Material	Vitreous China
Cistern	Dual flush, wall fixed, close coupled cistern, bottom inlet, internal flow, wall fixing kit
Cistern buttons	Raised buttons
AS Compliance	AS1428.1
Vandal Resistant Kit	Provide standard conversion kit to lock lid onto the cistern

Table 12: Water Closet Assembly (PS and HS)

Requirements	
Location	PS Toilets Boys and Girls HS Toilets Boys and Girls
Wels Rating	4 Star
Dual Flush	4.5 / 3 litre dual flush
Seat	Single flap seat, Black, Vandal resistant seat, blind fixings
Material	Vitreous China
Cistern	Dual flush, wall fixed low level cistern
AS Compliance	AS1172
Vandal Resistant Kit	Provide standard conversion kit to lock lid onto the cistern

Table 13: Water Closet Assembly (Pre School and Early Childhood)

Requirements	
Location	Pre School / Early Childhood Toilets Boys and Girls
Wels Rating	4 Star
Dual Flush	4.5 / 3 litre dual flush
Height floor to seat	385 mm
Seat	Single flap seat, White Junior closed front

Requirements	
Material	Vitreous China
Cistern	Dual flush, wall fixed low level cistern
AS Compliance	AS1172
Vandal Resistant Kit	Provide standard conversion kit to lock lid onto the cistern

Table 14: Water Closet Assembly (Staff and Student Ambulant)

Requirements	
Location	PS / HS Staff / Student Ambulant
Wels Rating	4 Star
Dual Flush	4.5 / 3 litre dual flush
Seat	Single flap seat, White
Material	Vitreous China
Cistern	Dual flush, wall fixed, low level cistern
AS Compliance	AS1428.1 / AS1172
Vandal Resistant Kit	Provide standard conversion kit to lock lid onto the cistern

Table 15: Urinal Assembly

Requirement	
Location	PS / HS Toilets Boys
Length	Modules up to a max 1400 mm length
Fall to centre waste	35mm
Material	Stainless Steel grade 304, no 4 finish, 1.2mm thick
Outlet	waste cover screw SS, locknut SS, perforated strainer disc SS grade 316 Non-return valve - silicone rubber lay flat tube, Lay flat tube retainer rings-- rubber O rings, Waste body ABS plastic or SS, Thread to suit standard 50mm plumbing fittings.
Inlet	38mm inlet assembly fabricated from Vitel Nylon 66 compound
Anti-Drum Compound	Coated to rear of urinal by manufacturer

Table 16: Urinal Flusher

Requirements	
Location	PS / HS Toilets Boys
Type	Programmable mains power operated hygiene flush system. Timed flusher unit
Solenoid Valve	Solenoid valve to AS MP52 Spec 030. Slow shut off to reduce water hammer. Capable of operating in the range of varying water pressures across NSW
WELS	5 star – when installed on 600mm of urinal
Program range	Flush duration: 2, 4, 6, 8 seconds Flush interval: 6, 8, 12, 24 hrs
Reset	Auto reset to programmed operation after power failure
Hygienic Flush	One flush within a 12-hr period when inactive.
Power Supply	240 v via AC adaptor
Installation	Entire urinal flusher system to be fully concealed in the ceiling space or bulkhead. Allow for service and maintenance access.

Table 17: Wash / Drinking Trough - Fabricated

Requirements	
Location	PS / HS Boys and Girls Toilets (except Hall with shared community use) PS / HS Outdoor Learning Areas HS / PS Drinking Facilities General HS Showers / Change
Reference Drawing	Refer to Figure 01: Wash Trough
Material	Stainless Steel grade 304, no 4 finish, 0.9 mm thick
Outlet	50mm, SS grate sufficient fall to effectively drain water to the grate.
Corners + Edging	Radius rounding finish to all corners, Return folds to remove all exposed leading edges. Sharp edges are not accepted.
Identification	Manufacturers name to be permanently embossed in a clear visible location on the trough

Requirements			
Overflow	Yes		
Plumbing	Chrome plated copper or SS. MANDATORY: PVC piping or PVC waste pipes or traps or flexible piping are not to be used.		
Rim Height to ground / FFL		Wash Trough Pre School 550 mm Primary 650 mm Secondary 700 mm	Drinking Trough 550 mm 700 mm 900 mm
Trough Guard	Drinking Trough Guards are to be installed on all external Drinking Troughs. Refer to METALWORK / DRINKING / WASH TROUGH GUARD		
Splash Back	Height 300mm. Fixed securely to wall		
Splashback material	Stainless Steel grade 304, no 4 finish, 0.9 mm thick		
Drinking Trough Support Assembly	40mm x 6mm MS assembly with pre-drilled fixing holes. Fully welded. Hot dip galvanised after fabrication. Fix securely to wall through pre-drilled holes with noncorrosive fasteners and 10mm dia min masonry anchors. Refer to METALWORK / BRACKET FOR DRINKING WATER/WASH TROUGH		

Figure 01: Wash Trough

LOCATION

PS603.03 Drinking Facilities

HS603.02 Drinking Facilities

SPECIFICATION REF

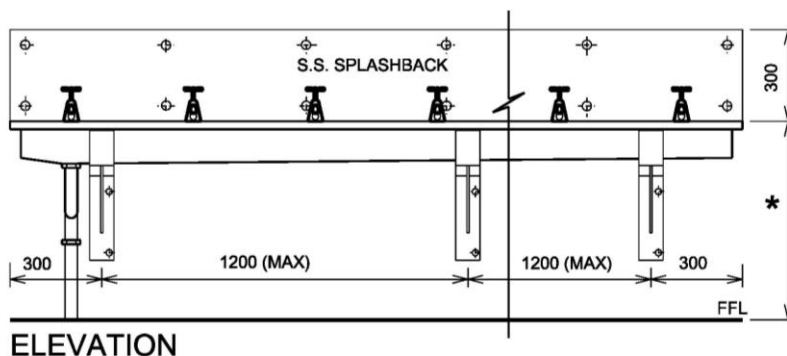
Metal Fixtures

Wastewater

Freshwater

NOTES

Guide only; do not use as a construction detail.
Trough standard lengths up to 4800 in 400 increments.



ELEVATION

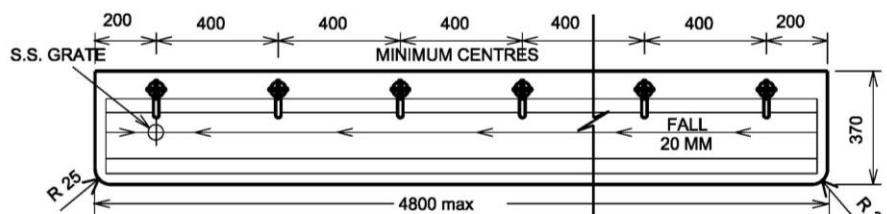
HEIGHT FROM F.F.L.

*** WASH TROUGH**

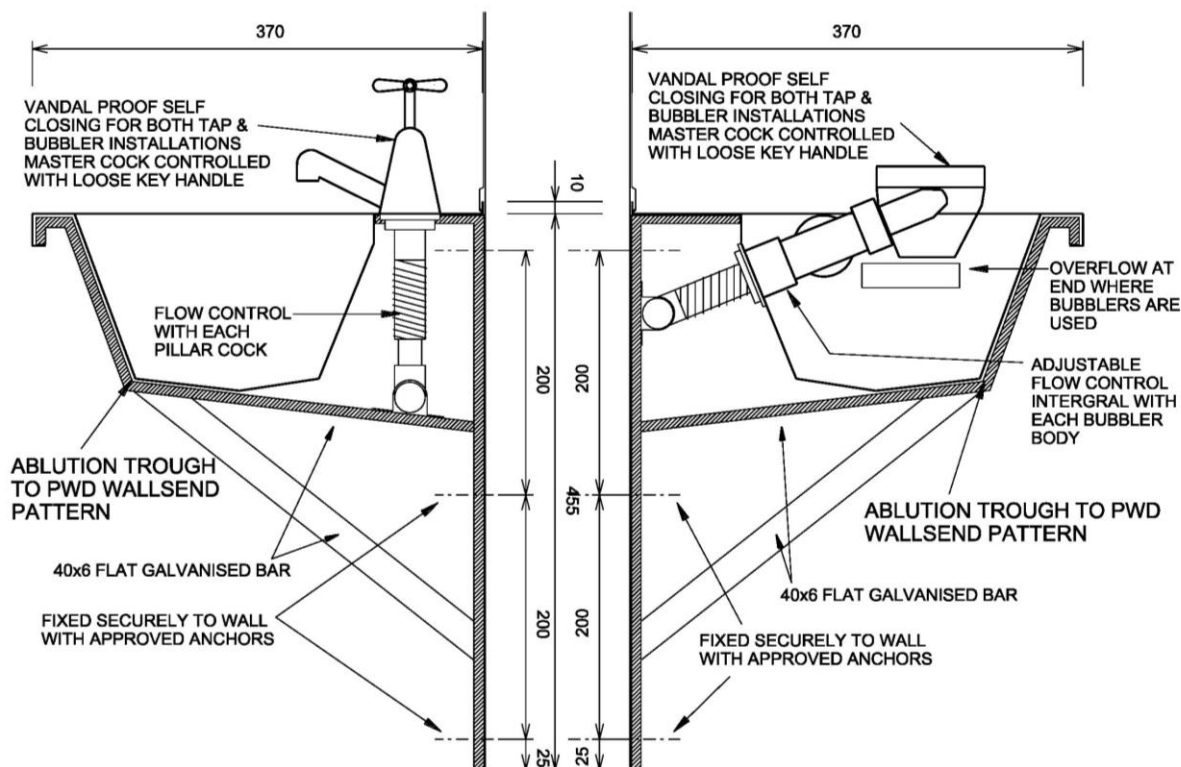
INFANTS	550
PRIMARY	650
SECONDARY	700

*** DRINK TROUGH**

INFANTS	550
PRIMARY	700
SECONDARY	900



PLAN - WASH / DRINKING TROUGH



SECTION THROUGH TROUGH

NTS

CROWN COPYRIGHT
STATE OF NEW SOUTH WALES

REVISION DATE

11 DECEMBER 2013

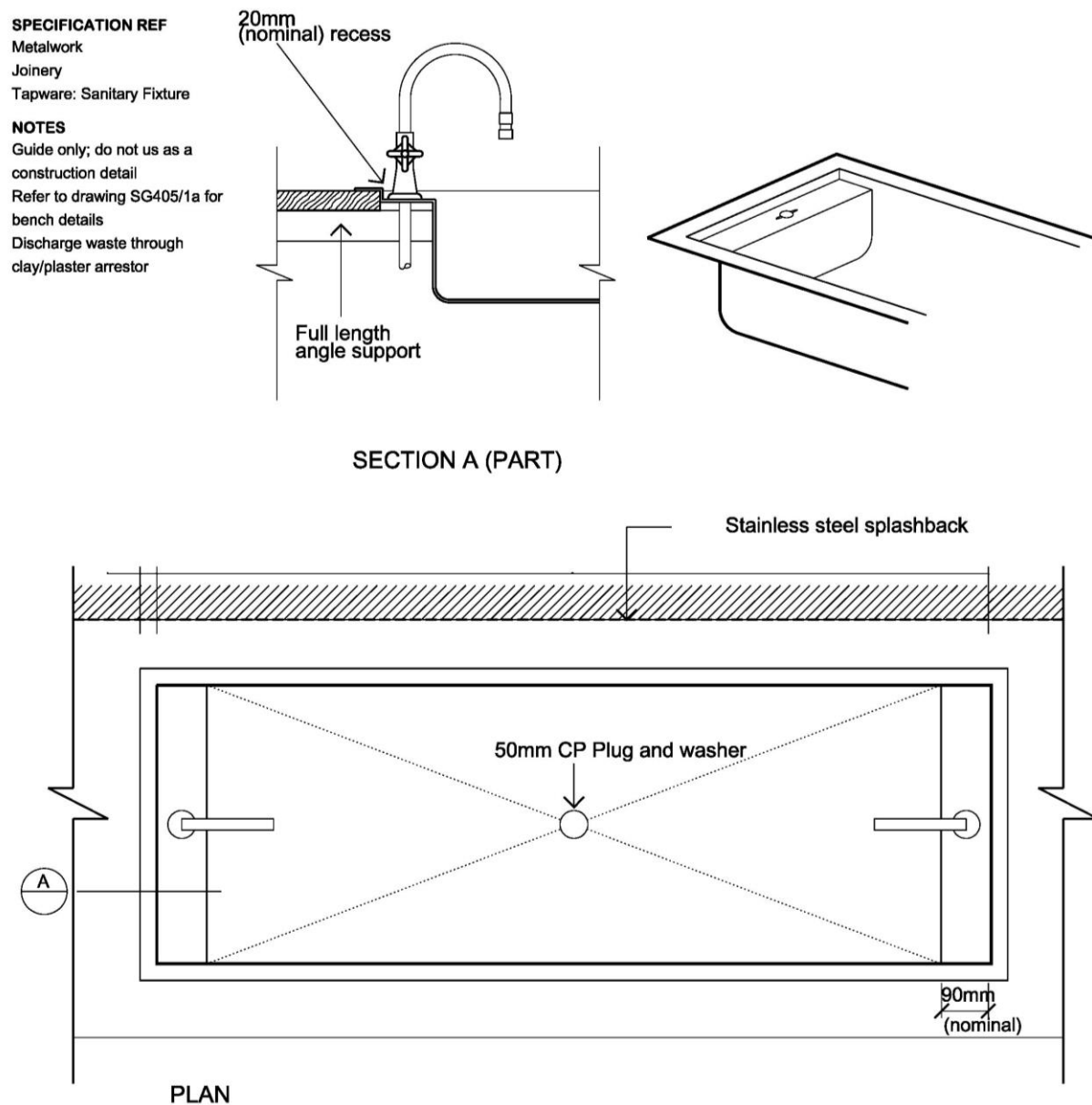
The information on this sheet once printed/exported is classed as an uncontrolled copy.

The currency of the information should be checked by visiting the EFSG website prior to using the information for any purposes.

Table 18: Art Trough - Fabricated

Requirements	
Location	HS Visual Arts Workshop HS Materials Workshop HS GLS with Art Trough
Type	Fabricated flush ss trough assembly recessed into laminated bench top. Tapware with anti-rotation lugs to be fitted to both ends of the trough
Reference	Refer to Figure 02 Art Trough and Bench METALWORK JOINERY TAPWARE
Trough Material	Stainless Steel grade 304, no 4 finish, 1.2 mm thick
Size Type 1	1560 mm L incl rim x 560 mm W incl rim x 200mm D.
Size Type 2	700 mm L incl rim x 560 mm W incl rim x 200mm D.
Outlet	50mm, SS grate with sufficient fall to effectively drain water to the grate.
Rim height from floor	700mm
Rim width	30mm
Installation	Secure trough to bench top with min 8 proprietary concealed fastening clips
Splash Back	Height 450mm from top of benchtop. Fixed securely to wall
Splashback material	Stainless steel Grade 304, no 4 finish, 0.9 mm thick

Figure 02: Art Trough and Bench



CROWN COPYRIGHT
STATE OF NEW SOUTH WALES

NTS

REVISION DATE
11 DECEMBER 2013

The information on this sheet once printed/exported is classed as an uncontrolled copy.
The currency of the information should be checked by visiting the EFSG website prior to using the information for any purposes.

Table 19: Special Art Trough with bench - Fabricated

Requirements	
Location	PS Outdoor Learning Area
Reference	Refer to Figure 03: Special Art Trough with Bench

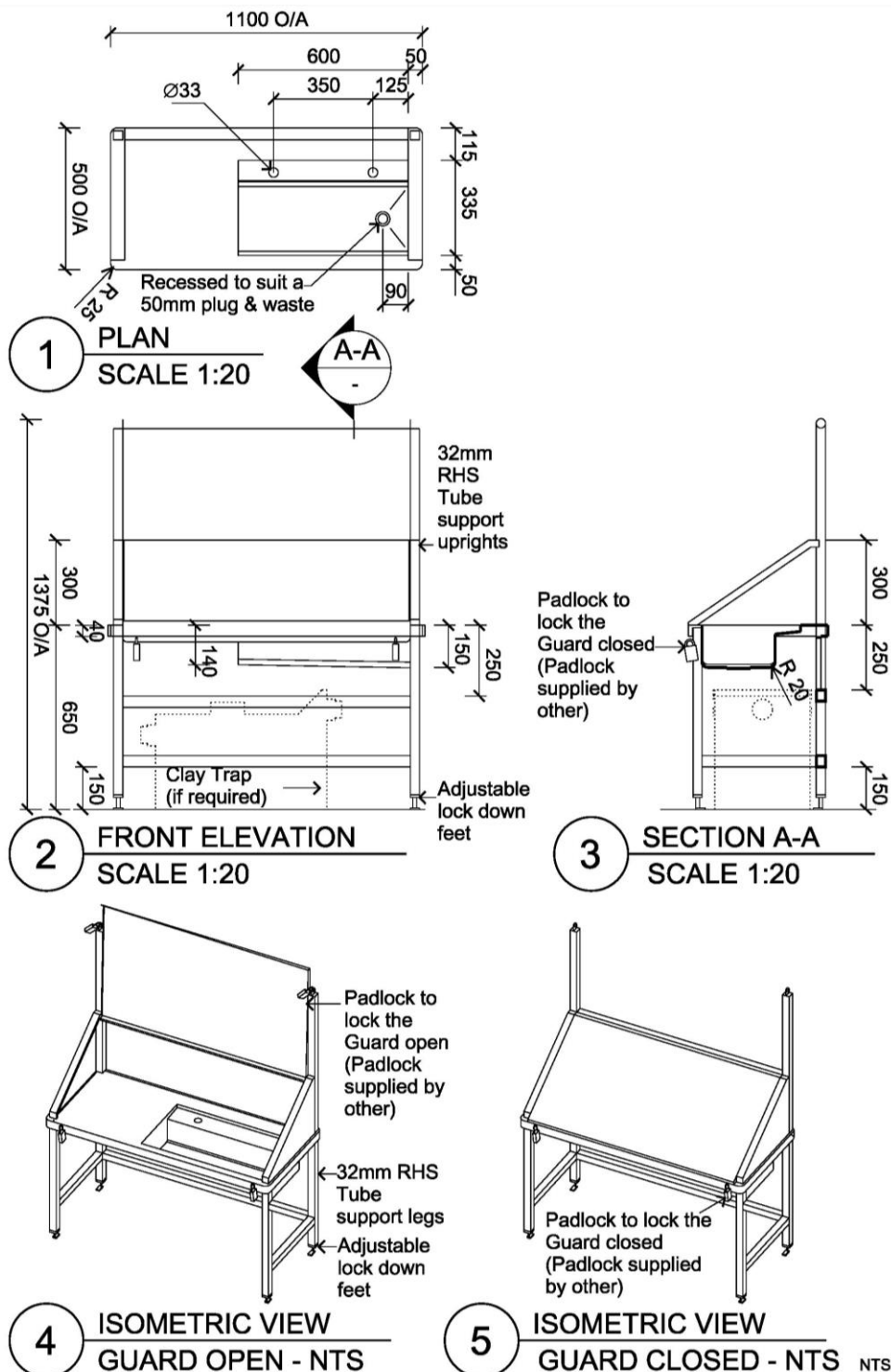
Figure 03: Special Art Trough with Bench

LOCATION

PS504.01 Covered Outdoor Learning Area - Small School
PS504.03 Covered Outdoor Learning Area - Large School

NOTES

- Constructed from no.4 satin finished, 1.2mm thick 304 Grade Stainless Steel
- The Trough has an inbuild fall to the 50mm plug and waste outlet
- Tap holes are provided to suit 2 off BUB223C type 48 pillar cock taps.
- The Standard size unit is 1100mm x 500mm x 1375 high
- All 4 off external corners, of the Trough Unit, are radiused to R25mm
- A Trough Guard is fitted to all units which is to be locked in both the open and closed positions
- The standard Padlock (Lockwood Part No - 215A40/619/6KD) is to be used with the unit, to be supplied by others.
- The support frame legs are constructed from 32mm RHS stainless steel tube with adjustable (lock down) feet fitted
- Note: The clay trap is shown as an option if required



CROWN COPYRIGHT
STATE OF NEW SOUTH WALES

REVISION DATE
11 DECEMBER 2013

The information on this sheet once printed/exported is classed as an uncontrolled copy.
The currency of the information should be checked by visiting the EFSG website prior to using the information for any purposes.

Table 20: Clay / Plaster Arrestor Art Trough with Pottery Wheel - Fabricated

Requirements	
Location	HS Visual Arts Workshop HS Visual Arts GLS with Pottery Wheels
Type	Stainless steel clay / plaster arrestor with removable lid, perforated stainless steel strainer basket and baffles on castors
Reference Drawing	Refer to Figure 04: Clay / Plaster Arrestor
Trough Material	Stainless Steel grade 304, no 4 finish, 0.9mm and 1.2 mm thick
Connection	50mm universal trap
Inlet	PVC 50mm dia on raised end of unit
Outlet	PVC 50mm dia with grate removed
Overflow	Yes
Strainer basket	removeable
Perforations	2mm dia, 15mm centres
Locating springs	Two attached to baffle to ensure strainer basket is located under inlet lip
Baffles Permanently fixed	Two
Baffles Removeable	One (1) solid, One (1) perforated
Baffle Perforations	5mm dia, 8mm centres
Outlet Control Type	Box positioned over outlet with open bottom end and a 6.4mm dia hole in top
Maintenance	Lid, strainer basket and removeable baffles must be able to be removed while the clay / plaster arrestor is in position and without disconnecting the inlet and outlet.

Figure 04: Clay / Plaster Arrestor

LOCATION

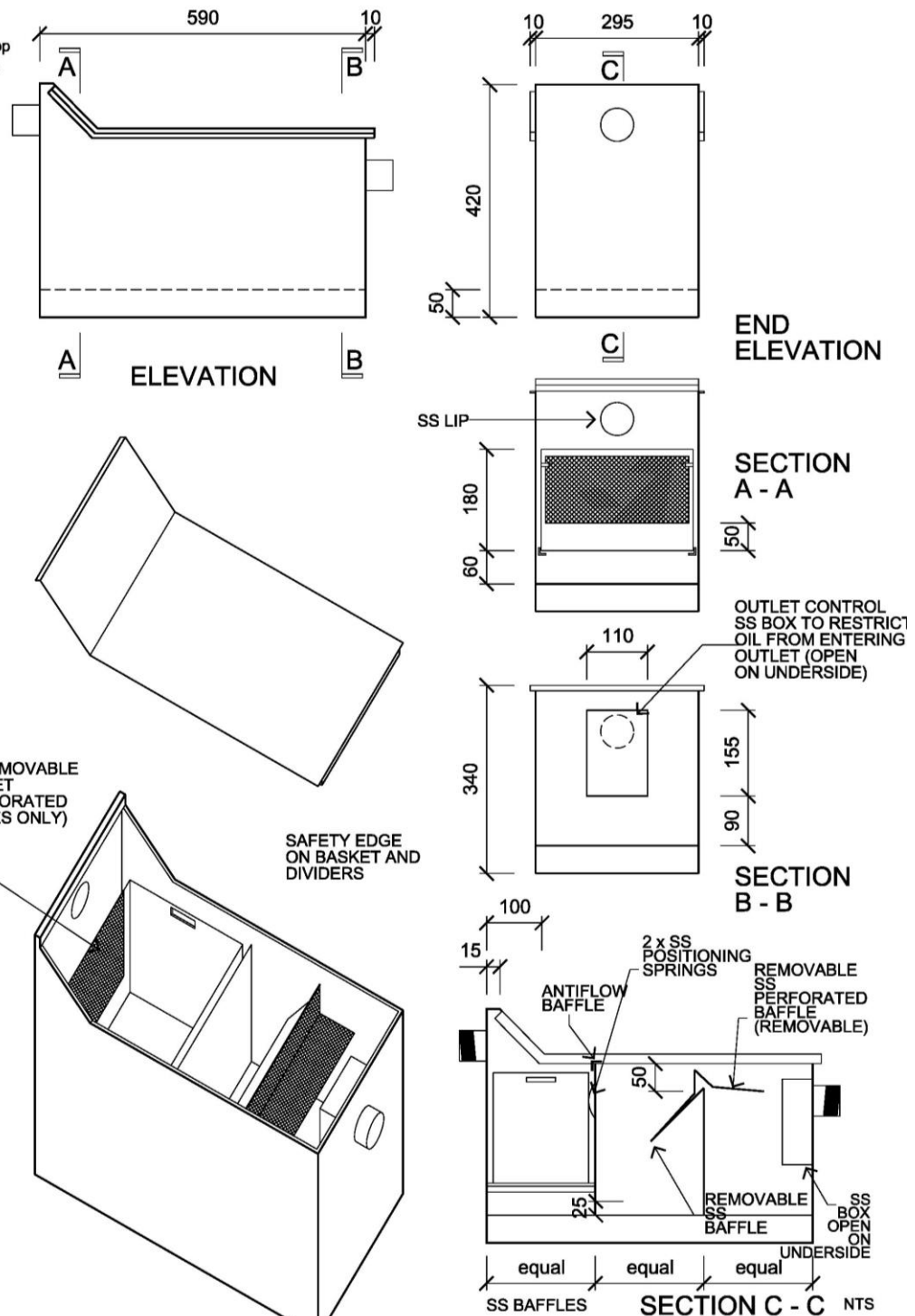
HS405.03 Visual Arts Workshop
HS413.01 Materials Workshop

SPECIFICATION REF

Sanitary Fixtures

NOTES

Guide only; do not use as a construction detail



CROWN COPYRIGHT
STATE OF NEW SOUTH WALES

REVISION DATE
11 DECEMBER 2013

The information on this sheet once printed/exported is classed as an uncontrolled copy.
The currency of the information should be checked by visiting the EFSG website prior to using the information for any purposes.

Table 21: Plant Soaking Shelf Trough

Requirements	
Location	HS Botany / Zoology Store
Type	Fabricated flush ss trough assembly recessed into laminated bench top. Tapware with anti-rotation lugs to be fitted to both ends of the trough
Reference Drawing	Refer to Figure 05: Plant Soaking Shelf METALWORK
Trough Material	Stainless Steel grade 304, satin finish, 0.9 mm thick
Size	
Height	950mm rim height from floor
Outlet	50mm, SS grate with sufficient fall to effectively drain water to the grate.
Overflow	Yes
Splash Back	Height 450mm from top of trough. Fixed securely to wall
Splashback material	Stainless steel Grade 304, No4 finish 0.9 mm thick

Figure 05: Plant Soaking Shelf

LOCATION

HS404.09 Botany/Zoology

SPECIFICATION REF

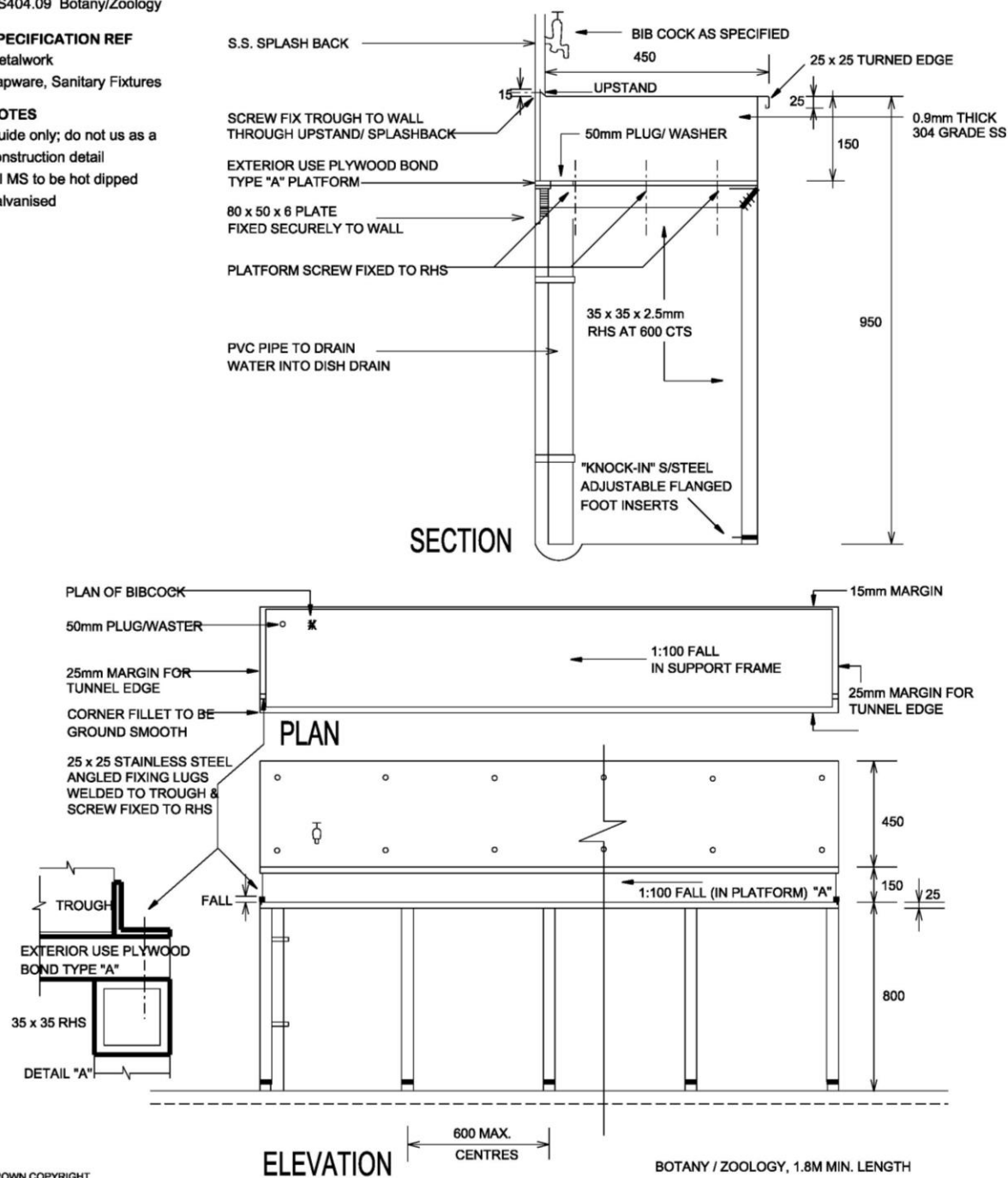
Metalwork

Tapware, Sanitary Fixtures

NOTES

Guide only; do not use as a construction detail

All MS to be hot dipped galvanised



CROWN COPYRIGHT
STATE OF NEW SOUTH WALES

REVISION DATE

11 DECEMBER 2013

The information on this sheet once printed/exported is classed as an uncontrolled copy.

The currency of the information should be checked by visiting the EFSG website prior to using the information for any purposes.

NTS

Table 22: Splashbacks

Requirements	
Location	PS / HS Provide list of locations where splashbacks are required
Reference	Refer to 05 INTERIOR/0572 MISCELLANEOUS FURNITURE
Type	Stainless steel splashback
Material	Stainless Steel grade 304, no 4 finish, 0.9 mm thick
Splash Back	Height 450mm from top of benchtop unless nominated otherwise.
Length	To suit application
Installation	Fix securely to wall. Seal between bottom edge of splashback and benchtop with white silicone mastic, gunned in, waterproof seal.

GUIDE NOTE: Delete subclause "4.1 Sanitary Fixtures" nominated in NATSPEC Building Template/ Worksection and replace with the following text:

4.02 Items with Integrated Sanitary Fixtures installed by Contractor

All items to be installed by the building contractor in accordance with statutory requirements.

GUIDE NOTE: Remove fixtures not required. Insert project specific locations.

Refer to [05 INTERIOR/0572 MISCELLANEOUS FURNITURE](#)

Table 23: B-05 Bench Cupboard, SK-42 Sink

Requirements	
Location	HS / PS Staff Room adjoining Staff Annex HS / PS Sick Bay HS / PS Office workroom HS GLS with sink HS / PS Library Administration HS / PS First Aid
Material	Stainless steel, Grade 304, bright finish
Bowls	One (1) centre bowl, Two (2) x drainers
Capacity	18 litres min
Bowl Size (L x W) (mm)	350 W x 420 L x 180 D approx.
Overall size (L x W) (mm)	1200 L x 500 W approx.
Tap holes	Three (3)
Drainer	Located both sides of bowl. Fluted finish.
Overflow	Yes

Table 24: B-06 Bench Cupboard, SK-32 Sink

Requirements	
Location	HS Science GLS
Material	Stainless steel, Grade 304, bright finish
Bowls	One (1) bowl
Capacity	18 litres min
Bowl Size (L x W) (mm)	298 W x 298 L x 200 D
Overall size (L x W) (mm)	362 W x 362 L
Tap holes	Zero (0)

Table 25: B-080S Bench Cupboard, SK-40 Sink

Requirements	
Location	PS Practical Activity Area PS Shared Practical Activity Area IO/IS/IP + BD/CD/ED Practical Activity Area IO/IS/IP Shared Practical Activity Area
Material	Stainless steel, Grade 304, bright finish
Overall size (L x W) (mm)	1500 L x 450 W x 160 D
Tap holes	Three (3)

Table 26: B-21 Bench Cupboard, SK-50 Trough

Requirements	
Location	HS Practical Activities Area
Feature	B21 Bench cupboard, technology and top, bench technology, SK50 Craft Trough
Material	Stainless steel, Grade 304, bright finish
Overall size (L x W) (mm)	900 W x 480 L x 160 D
Tap holes	One (1)

Table 27: B-21 Bench Cupboard, SK-32 Sink

Requirements	
Location	HS Science Preparation Area HS GLS with Science Demonstration Bench
Feature	B21 Bench cupboard and top, bench technology, SK32 Sink
Material	Stainless steel, Grade 304, bright finish
Overall size (L x W) (mm)	298 W x 298 L x 200 D
Tap holes	Zero (0)

Table 28: B-21 Bench Cupboard, SK-41 Sink

Requirements	
Location	Community Clinic Staff Room HS Clinic Boys HS Fitness Laboratory HS GLS Type 7 + 14 HS Preparation/ Printing HS Kitchen Type 1 + Type 2
Feature	B21 Bench cupboard and top, bench technology, Stainless steel SK41 Sink
Material	Stainless steel, Grade 304, bright finish
Bowl	One (1) centre bowl, Two (2) x drainers
Capacity	18 litres min
Bowl Size	350 W x 420 L x 180 D
Tap holes	Three (3)
Drainer	Located both sides of bowl. Fluted finish.
Overflow	Yes
Overall size (L x W) (mm)	1200 L x 500 W x 180 D

Table 29: B-21 Bench Cupboard, SK-42 Sink

Requirements	
Location	HS Clinic Girls PS Special Programs Room PS Sick Bay HS + PS Staff Room HS + PS Tea Room
Feature	B21 Bench cupboard and top, bench technology, Stainless steel SK42 Sink
Material	Stainless steel, Grade 304, bright finish
Bowl	One (1) centre bowl, Two (2) x drainers
Capacity	18 litres min
Bowl Size	350 W x 420 L x 180 D

Requirements	
Tap holes	Three (3)
Drainer	Located both sides of bowl. Fluted finish.
Overflow	Yes
Overall size (L x W) (mm)	1200 L x 500 W

Table 30: B-21 Bench Cupboard, SK-34 Sink

Requirements	
Location	BD/CD/ED Practical Activities Area IO/IS/IP Practical Activities Area IO/IS/IP Shared Practical Activities Area HS + PS Tea Room HS Kitchen Preparation HS Kitchen Domestic and Semi Commercial
Feature	B21 Bench cupboard and top, bench technology, Stainless steel SK34 Sink
Material	Stainless steel, Grade 304, bright finish
Bowl	Two (2) bowls, Two (2) x drainers
Capacity	18 litres min each bowl
Bowl Size	350 W x 405 L x 180 D
Tap holes	Three (3)
Drainer	Located both sides of bowls. Fluted finish. 380 each
Overflow	Yes
Overall size (L x W) (mm)	1500 L x 500 W

Table 31: B-48 Bench Cupboard, SK-32 Sink

Requirements	
Location	HS Science Laboratory
Material	Stainless steel, Grade 304, bright finish
Bowls	One (1) bowl,

Requirements	
Capacity	18 litres min
Bowl Size (L x W) (mm)	298 W x 298 L x 200 D
Overall size (L x W) (mm)	362 W x 362 L
Tap holes	Zero (0)

Table 32: B-70 Darkroom Trough, SK-41 Sink

Requirements	
Location	HS Dark Room
Feature	B70 Darkroom Trough with Bench Support
Material	Stainless steel, Grade 304, bright finish
Bowl	One (1) centre bowl, Two (2) x drainers
Capacity	18 litres min
Bowl Size	350 W x 420 L x 180 D
Tap holes	Three (3)
Drainer	Located both sides of bowl. Fluted finish.
Overflow	Yes
Overall size (L x W) (mm)	1200 L x 500 W x 180 D

Table 33: M-79 Top, SK-40 Trough

Requirements	
Location	PS Practical Activity Area
Feature	M-79 Top, Bench Technology, SK-40 (PA Trough)
Material	Stainless steel, Grade 304, bright finish
Overall size (L x W) (mm)	1500 L x 450 W x 160 D
Tap holes	Three (3)

Table 34: SP-48 Bench Cupboard, SK-42 Sink

Requirements	
Location	HS Science Laboratory

Requirements	
Feature	SP-48 Bench, Height adjustable, front wind, Science Flexible waste connection
Material	Stainless steel, Grade 304, bright finish
Capacity	18 litres
Bowl Size (L x W) (mm)	298 L x 298 W x 200 D
Overall size (L x W) (mm)	362 W x 362 L x 200 D
Tap holes	Zero (0)

Table 35: SP-49 Bench Cupboard, SK-42 Sink

Requirements	
Location	HS Kitchen Domestic
Feature	SP-49 Bench, Height adjustable front wind, Kitchen, Flexible waste connection
Material	Stainless steel, Grade 304, bright finish
Bowl	One (1) centre bowl, Two (2) x drainers
Capacity	18 litres
Bowl Size	350 W x 420 L x 180 D
Tap holes	One (1)
Drainer	Located both sides of bowl. Fluted finish.
Overflow	Yes
Overall size (L x W) (mm)	1200 L x 500 W

Table 36: B-0506 Bench, SK-41 Sink

Requirements	
Location	BD/CD/ED
Feature	B-0506 Bench Cupboard 1200, Sink (white)
Material	Stainless steel, Grade 304, bright finish

Requirements	
Bowl	One (1) centre bowl, Two (2) x drainers
Capacity	18 litres
Bowl Size	350 W x 420 L x 180 D
Tap holes	One (1)
Drainer	Located both sides of bowl. Fluted finish.
Overflow	Yes
Overall size (L x W) (mm)	1200 L x 500 W